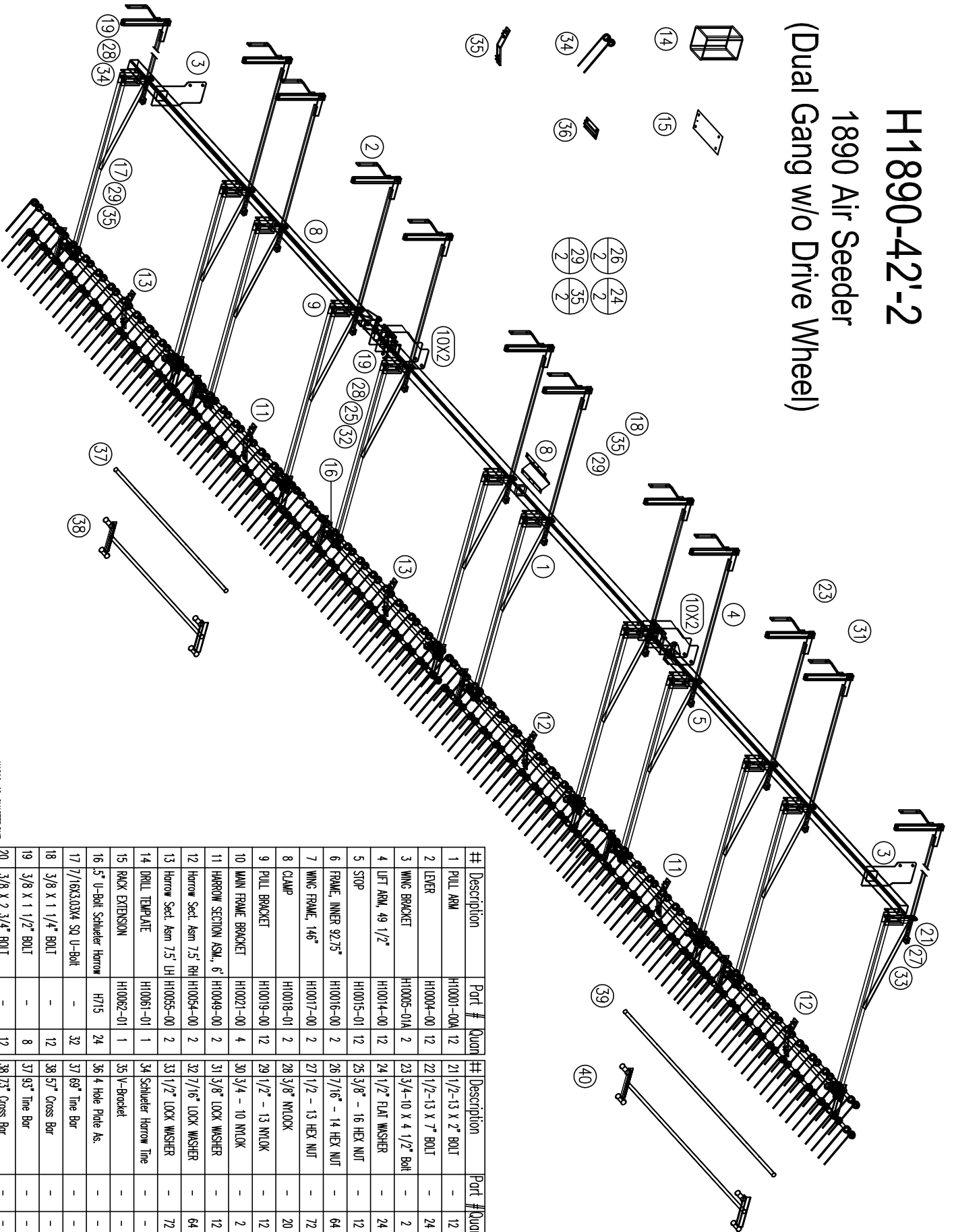


H1890-42'-2

1890 Air Seeder

(Dual Gang w/o Drive Wheel)



#	Description	Part #	Quan	#	Description	Part #	Quan
1	PULL ARM	H10001-00A	12	21	1/2-13 X 2" BOLT	-	12
2	LEVER	H10004-00	12	22	1/2-13 X 7" BOLT	-	24
3	WING BRACKET	H10005-01A	2	23	3/4-10 X 4 1/2" Bolt	-	2
4	LIFT ARM, 49 1/2"	H10014-00	12	24	1/2" FLAT WASHER	-	24
5	STOP	H10015-01	12	25	3/8" - 16 HEX NUT	-	12
6	FRAME, INNER 92.75"	H10016-00	2	26	7/16" - 14 HEX NUT	-	64
7	WING FRAME, 146"	H10017-00	2	27	1/2 - 13 HEX NUT	-	72
8	CLAMP	H10018-01	2	28	3/8" NUTLOCK	-	20
9	PULL BRACKET	H10019-00	12	29	1/2" - 13 NUTLOCK	-	12
10	MAIN FRAME BRACKET	H10021-00	4	30	3/4 - 10 NUTLOCK	-	2
11	HARROW SECTION ASM, 6'	H10049-00	4	31	3/8" LOCK WASHER	-	12
12	Harrow Sect. Asm 7.5' RH	H10054-00	2	32	7/16" LOCK WASHER	-	64
13	Harrow Sect. Asm 7.5' LH	H10055-00	2	33	1/2" LOCK WASHER	-	72
14	DRILL TEMPLATE	H10061-01	1	34	Schlieder Harrow Time	-	-
15	RACK EXTENSION	H10062-01	1	35	V-Bracket	-	-
16	5" U-Bolt Schlieder Harrow	H715	24	36	4 Hole Pile As.	-	-
17	7/16X3.0X4 SQ U-Bolt	-	32	37	160" Time Bar	-	-
18	3/8 X 1 1/4" BOLT	-	12	38	57" Cross Bar	-	-
19	3/8 X 1 1/2" BOLT	-	8	37	93" Time Bar	-	-
20	3/8 X 2 3/4" BOLT	-	12	38	75" Cross Bar	-	-

H1890-42-2-MASTER/DXF