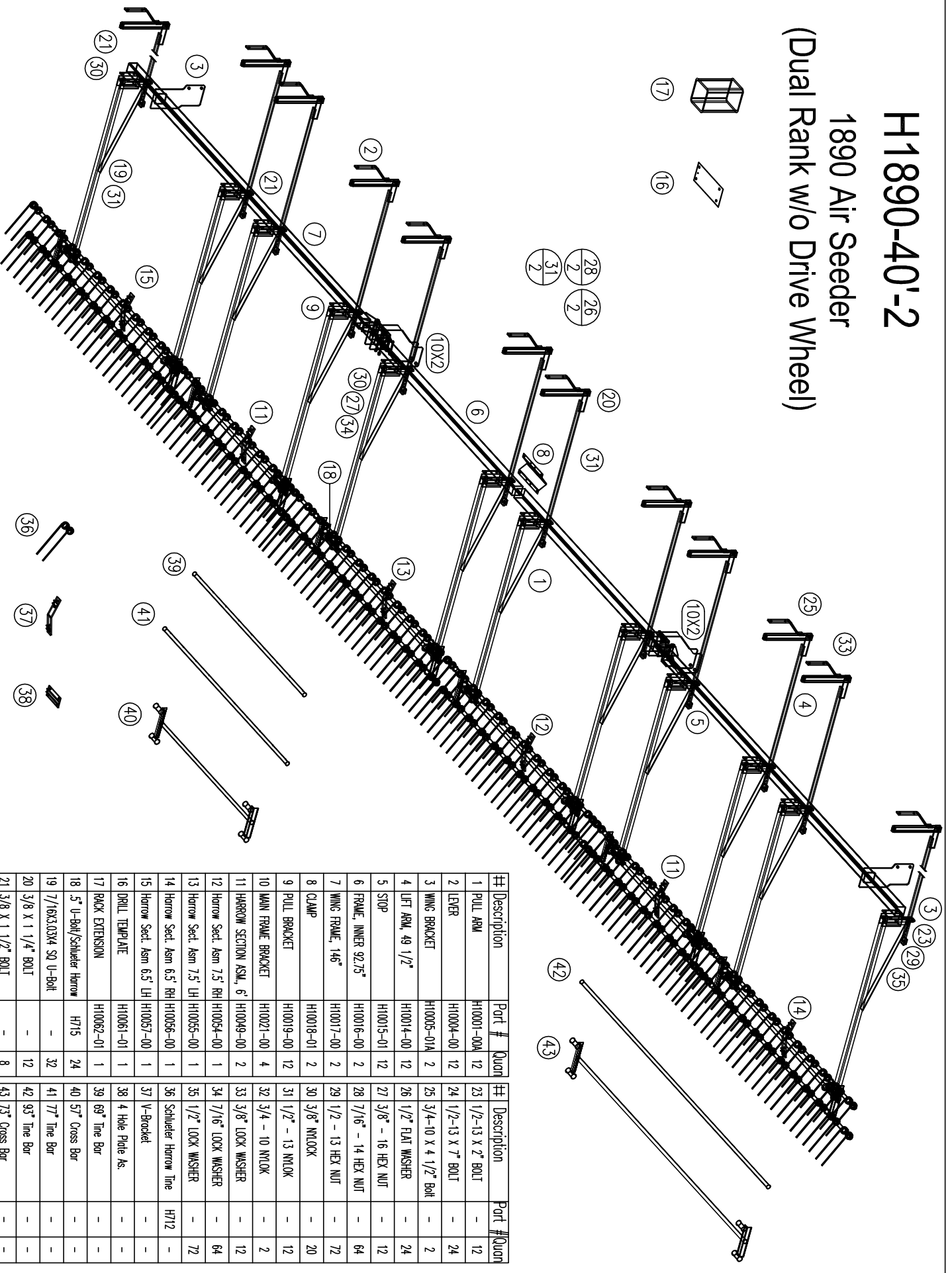


H1890-40'-2

1890 Air Seeder

(Dual Rank w/o Drive Wheel)



#	Description	Part #	Quan	#	Description	Part #	Quan
1	PULL ARM	H10001-00A	12	23	1/2-13 X 2" BOLT	-	12
2	LEVER	H10004-00	12	24	1/2-13 X 7" BOLT	-	24
3	WING BRACKET	H10005-01A	2	25	3/4-10 X 4 1/2" Bolt	-	2
4	LIFT ARM, 49 1/2"	H10014-00	12	26	1/2" FLAT WASHER	-	24
5	STOP	H10015-01	12	27	3/8" - 16 HEX NUT	-	12
6	FRAME, INNER 92.75"	H10016-00	2	28	7/16" - 14 HEX NUT	-	64
7	WING FRAME, 146"	H10017-00	2	29	1/2 - 13 HEX NUT	-	72
8	CLAMP	H10018-01	2	30	3/8" NUTLOCK	-	20
9	PULL BRACKET	H10019-00	12	31	1/2" - 13 NUTLOCK	-	12
10	MAIN FRAME BRACKET	H10021-00	4	32	3/4 - 10 NUTLOCK	-	2
11	HARROW SECTION ASM, 6'	H10004-00	2	33	3/8" LOCK WASHER	-	12
12	Harrow Sect. Asm 7.5' RH	H10004-00	1	34	7/16" LOCK WASHER	-	64
13	Harrow Sect. Asm 7.5' LH	H10005-00	1	35	1/2" LOCK WASHER	-	72
14	Harrow Sect. Asm 6.5' RH	H10006-00	1	36	Schlietter Harrow Line	H712	-
15	Harrow Sect. Asm 6.5' LH	H10007-00	1	37	V-Bracket	-	-
16	DRILL TEMPLATE	H10061-01	1	38	4 Hole Pile As.	-	-
17	RACK EXTENSION	H10062-01	1	39	69" Line Bar	-	-
18	5" U-Bolt/Schlietter Harrow	H715	24	40	57" Cross Bar	-	-
19	7/16X3.03X4 SQ U-Bolt	-	32	41	77" Line Bar	-	-
20	3/8 X 1 1/4" BOLT	-	12	42	93" Line Bar	-	-
21	3/8 X 1 1/2" BOLT	-	8	43	73" Cross Bar	-	-
22	3/8 X 2 3/4" BOLT	-	12				

H1890-40-2MASTER.DXF