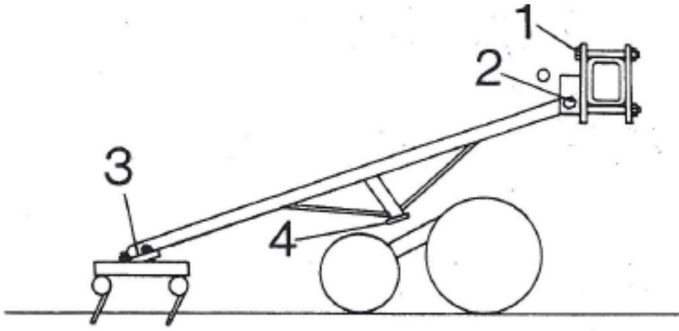
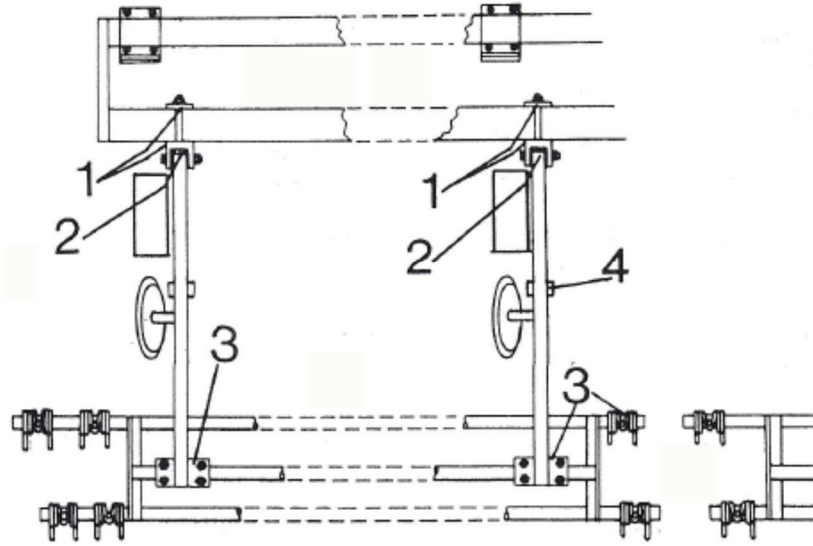


SCHLUETER HARROW INSTALLATION INSTRUCTIONS

FOR JOHN DEERE 750, 1560 & 1590 SERIES NO-TILL DRILLS

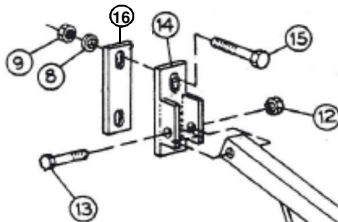


1. Mount attaching brackets on the upper frame tube directly in front of the outer gangs and the second gang from the center on each side. Do not tighten bolts yet.
2. Connect the pull bars to the brackets so the bars are under the metering rod.
3. Connect the pull bars to the harrow as shown. Single spring end may go to the inside or outside of drill as needed depending on row spacing. Do not tighten bolts yet.
4. Position the brackets so the pull bar contacts the closing wheel arm as the drill is raised. Position the harrow and make sure all pull bars are aligned. Now tighten all bolts.



Schlueter Harrow Parts List

Item	Part No.	Description
1	H712	Spring Tine
2		Hex Capscrew, 5/16" x 2"
3		Lockwasher, 5/16"
4		Hex Nut, 5/16"
5	H10050-01 H10053-01	Tine Bar, 93" Tine Bar, 117"
6	H10046-00 H10045-00	Cross Bar, 73" Cross Bar, 81"
7	H715	U-Bolt, 1/2"
8		Lockwasher, 1/2"
9		Hex Nut, 1/2"
10	H10022-00	Adjustment Tie Bar
11	H10023-00	Pull Bar
12		Nylon Locknut, 3/8"
13		Hex Capscrew, 3/8" x 2 3/4"
14	H10031-00	Attaching Bracket JD 750 Drill
15		Hex Capscrew, 1/2" x 6"
16	H10031-01	Plate



Harrow may be leveled when in the raised position by moving front mounting bracket up or down in slotted holes.

